

BVI 9400

QUICK REFERENCE FOR
BLADDER VOLUME

BladderScan®
Bladder Volume Instruments

1. Turn on the BVI 9400 by pressing the Power button.

If the device is in sleep mode, press any button. The instrument turns on.



2. Select the exam mode.



Select to scan a patient less than 48 inches (122 cm) tall and weighing less than 60 lbs (27 kg).



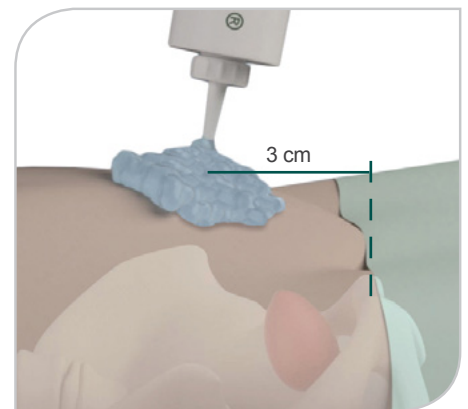
Select to scan a female patient who has not had a hysterectomy.



Select to scan all other patients.

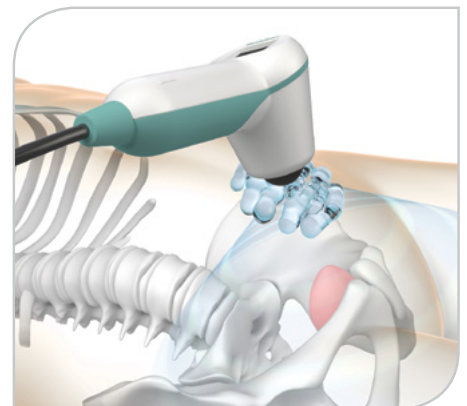
3. Have the patient lie in the supine position with abdominal muscles relaxed.

4. Place an ample amount of gel midline on the patient's abdomen approximately 1 inch (3 cm) above the symphysis pubis (pubic bone).

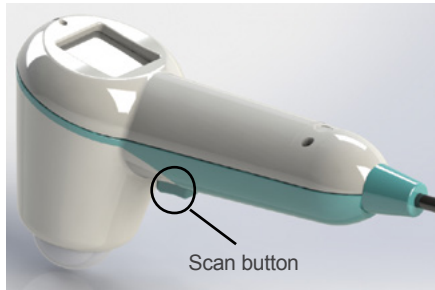


5. Stand on the patient's right side. The probe handle should point toward you.

6. Place the instrument on the gel on the patient's abdomen, and aim the instrument slightly downward toward the patient's coccyx (tail bone).



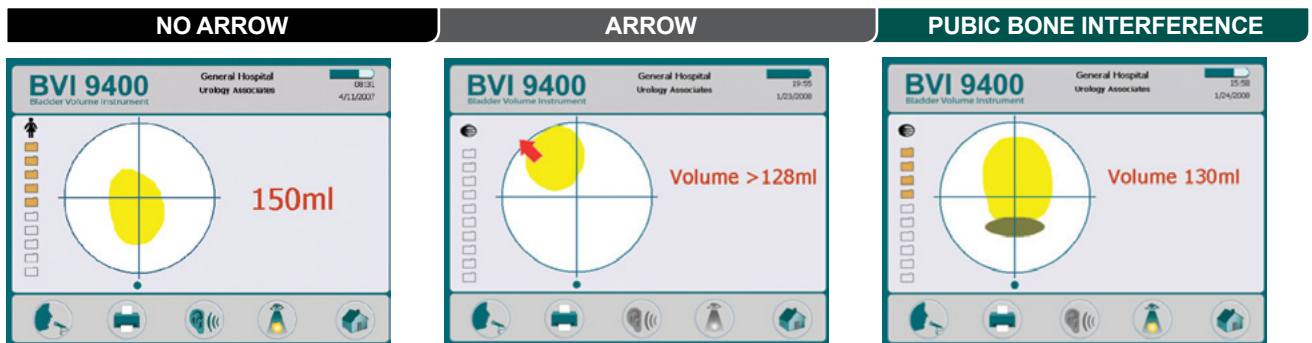
7. Press and release the **Scan** button.



8. Hold the probe steady until the scan is finished.

When you hear the end-scan tone, the scan is complete.

9. Using the **Results** screen, verify that the aim was accurate.






If the scan is successful, the bladder appears in the center of the crosshairs on the console. The probe shows eight arrows on the aiming display.

If the scan is unsuccessful, the probe shows an arrow (solid or flashing) indicating the direction to move the probe to be on target.

The pubic bone is inside the image cone. The pubic bone may be obscuring part of the bladder. You may want to re-aim and re-scan.

10. If you want to save the scan, record a voice annotation as follows:

- On the console, press and release the **Record** button .
- Hold the microphone approximately 6 inches (15 cm) from your mouth and speak clearly.
- When you are finished recording, press the **Stop** button .
- Press the **Listen** button . The voice annotation plays.
- If you are not satisfied with the recording, repeat the recording process.

800.331.2313 | verathon.com



verathon.com
<https://my.scanpoint.com>



Corporate Headquarters:
Verathon Inc.
20001 North Creek Parkway
Bothell, WA 98011, USA
Tel: 800.331.2313 (USA & Canada only)
Tel: 425.867.1348 Fax: 425.883.2896



EC Rep Address
Verathon Medical (Europe) B.V.
Willem Fenengstraat 13
1096 BL Amsterdam, The Netherlands
Tel: +31 (0) 20 210 30 91
Fax : +31 (0) 20 210 30 92